


Swivel castor 530 PT 75 P

Furniture Castors Series 530 PL - Wheel P

 -20 °C - +60 °C


swivels easily


wear resistant


shock proof


floor protective


weather proof

Wheel

Casted high quality nylon wheel black

High quality nylon housing - black

Swivel bearing with combined
plain-ball bearing

Wheel brake - glass fibre reinforced

Wheel axle revited

Swivel castor	Wheel-Ø A x width B mm: 75x13+13
---------------	----------------------------------

Load Capacity kg:	60
-------------------	----

Load capacity tested according to EN 12530 and EN 12527	
---	--

Overall height H mm:	96
----------------------	----

Dimension of top plate TP	55x55
---------------------------	-------

mm:

Hole spacing HS mm:	42x42/40x40
---------------------	-------------

Hole-Ø HD mm:	6,2
---------------	-----

Swivel radius SR mm:	73
----------------------	----

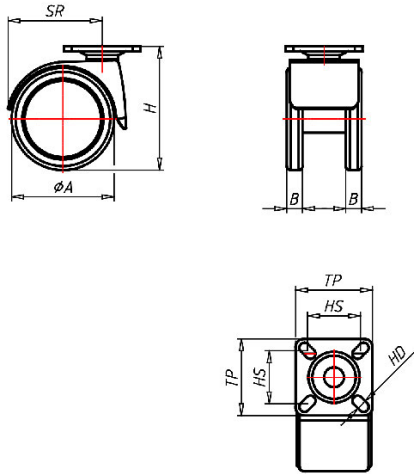
Wheel bearing:	Nylon plain bearing
----------------	---------------------

Advantages

- ✓ easy running on smooth floors
- ✓ impact proof
- ✓ high abrasion resistance
- ✓ easy to clean
- ✓ high chemical resistance

©Copyright 2024 Rollenbau GmbH, www.rollenbau.at 20.05.2024

 ROLLENBAU



Applications

- Book carts
- Sidetables
- Laboratory equipment
- Instrument stands
- School furniture
- Bedside carts
- Health-Professionals